

# Prysm Cloud

The Prysm Cloud allows users to collaborate anytime, anywhere and from any device. It is the backbone of the Prysm Application Suite's real-time, multi-site collaboration features. Prysm Cloud stores project and workspace, data and content, in a secure centralized location, providing the ultimate flexibility for participant access.

For more information, contact us at [sales@prysm.com](mailto:sales@prysm.com), +1.408.586.1178 or 1.877.99.PRYSM.



## Available Environments

The Prysm Cloud is available in two environments, the Prysm-hosted service environment and a customer hosted environment.

### Prysm-Hosted Cloud

- ▶ Provides the latest platform features and enhancements
- ▶ Back end configuration and maintenance is provided by Prysm

### Customer-Hosted Cloud

- ▶ Fully customer-hosted and managed instance <sup>1</sup>
- ▶ Designed to be deployed into a customer's VM infrastructure

## Features

- ▶ Enables real-time and multi-site collaboration in the same Prysm Application Suite project and workspace
  - Up to 15 users can enter the same workspace at the same time
  - Changes to the workspace by any user at any end point are automatically replicated across all other endpoints
  - Share project access with one or multiple users
- ▶ Mirror files and media objects uploaded to the Prysm Cloud to different endpoint users <sup>2</sup>
  - Share project access with one or multiple users
  - Requires a minimal real-time data transfer bandwidth of 1.5 Mbps
- ▶ Users can be logged into up to two displays at one time via a Prysm Display or mobile device
- ▶ User friendly Prysm Application Suite software administration portal (Web Admin) to configure features and settings
  - Provision users and access levels (administrator, general user, etc.)
    - » Prevent a user outside an account from viewing projects or the associated files within those projects
  - Create and manage projectst
    - » Control project security/visibility and other critical application permissions by restricting permissions
  - Configure UI backgrounds, colors and content layout (snap grids)

<sup>1</sup>See resource and infrastructure requirements. Windows Server 2012 R2 required but not included.

<sup>2</sup> Live video sources currently cannot be mirrored across workspace users.

...continued on reverse

## Technical Specifications

### Hardware Host Requirements

- ▶ Customer-hosted and maintained server platform
- ▶ Up to 100 Prism Application Appliances and 250 users can be handled by a single VM server

### VM Server Hardware Configuration Requirements

Server Manufacturer	Any (HP, Dell or Cisco recommended)
Processor	Intel® Xeon 2600 v2 or later
Processor Frequency	2.0 GHz or greater
Memory	2 GB RAM per logical core (Minimum 3 GB)
Disk Space	100 GB (SSD recommended)

### SQL and Storage Area Network Requirements

- ▶ VM Server SQL and Storage Requirements
  - SQL Server 2012 R2, minimum 2GB
  - Virtual Host attached storage (ISCSI SAN or Local), 2TB
- ▶ VM server license is required

### Network Requirements

#### VM Server Network Configuration Requirements<sup>3</sup>

- ▶ VM must be on a dedicated network port; isolated from out-of-band systems
- ▶ All memory channels must be enabled to maximize bandwidth
- ▶ Customer-Hosted Cloud servers require an internet connection. Once each day, Customer-Hosted Cloud servers communicate with the Prism Licensing Server to verify and update new entitlements for features or user licenses.
- ▶ VM Server and the SQL Database Server (SAN) must be in the same data-center with a latency less than 5ms

Admin HTTP/HTTPS	80/443
API HTTPS	4433
Logging	5757 (UDP)
RDP	3389 (TCP/UDP)
SMTP	587 (outbound, 25 may be used for some instances)
LDAP (optional)	389/3268 (SSL not in use)

## User Licensing

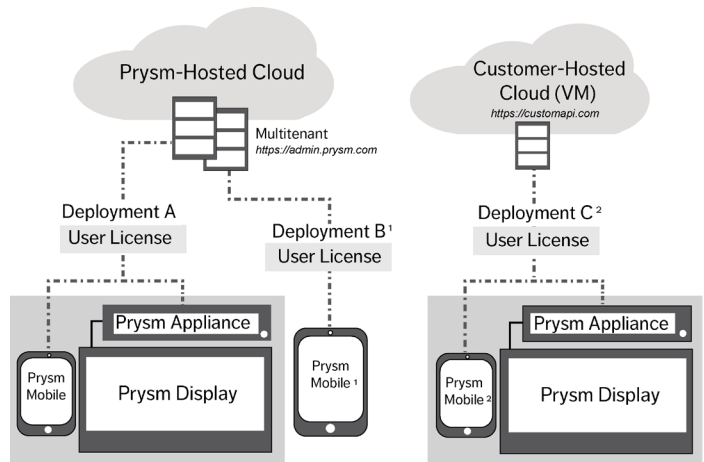
Prism subscription based user licenses are required to use the Prism Application Suite.

### User Subscription Requirement

- ▶ Individual user licenses are required for all Prism Application Suite users
  - Login credentials are based on user e-mail addresses and passwords associated to a valid license
- ▶ Individual user licenses are based on a yearly subscription
- ▶ Legacy customers are required to purchase a user subscription to use Prism for Web
- ▶ A user license can be used to sign in to the Prism Application Suite on any Prism display and to Prism for Web
  - A user license can only be used concurrently on a maximum of two devices

### Subscription Requirements Matrix

Configuration	User License
Prism Display with Prism Application Appliance + Prism for Web	1 per user
Prism Display with Prism Application Appliance	1 per user
Prism for Web Only	1 per user



- 2016 release

<sup>1</sup> Customer provisioned client certificate for each HTTPS endpoint

Contact us at sales@prysm.com, +1.408.586.1178 or 1.877.99.PRYSM with the following product information:

- Prism Application Suite User License, 490-00003-00
- Customer Hosted Cloud - Application Server Deployment Package, 490-00020-00

### Disclaimer:

The information contained herein is subject to change without notice. The only warranties for Prism products and services are set forth in the express warranty statements accompanying the applicable customer agreement. Nothing herein should be construed as constituting an additional warranty. This document is provided solely for general informational purposes. Prism shall not be liable for technical or editorial errors or omissions contained herein. Video wall display characteristics may vary from the tile display characteristics specified herein based upon factors including, but not limited to, the size of the video wall and display configuration settings. All trademarks mentioned are the property of their respective owners.